



Childhood Cancer International

EUROPE

We aim at ensuring that all children and adolescents diagnosed with cancer, their parents and siblings as well as childhood cancer survivors are not left alone, no matter where in Europe they live.



CCI EUROPE

- 🌐 **Largest umbrella-organisation**
for childhood cancer patient-organisations in Europe
- 🌐 **67 member-organisations** in 34 different countries
- 🌐 European branch of Childhood Cancer International (CCI),
global childhood cancer organisation covering all regions in the world
- 🌐 **We care, we share**



FACTS ABOUT CHILDHOOD CANCER

1st

cause of death by disease in
children aged 1+

1 out of 300

new-borns will develop cancer
before turning 20

2/3

of survivors have late side effects
from treatments, which are severe
and impact on the daily life for half
of them

6000

young people die each year of
cancer in Europe

Today, **500.000** Europeans have survived childhood cancer.

FACTS ABOUT CHILDHOOD CANCER

Cancers in children differ from cancers in adults. The most frequent childhood cancers are :

- 🌐 leukaemias
- 🌐 tumours of the central nervous system
- 🌐 lymphomas
- 🌐 neuroblastomas

They occur from birth to adolescence, with 35% of the typical childhood cancers occurring before the age of five years

Unequal access to standard care and research across Europe

Beyond 5 years from diagnosis, disease-free survivors have **higher mortality rates** than their non-affected peers



Development of CCI EUROPE'S PILLARS STRATEGIC PLAN

The CCI Europe Pillars were set up in order to shape CCI Europe's strategic plan and build the basis for a roadmap on CCI Europe's present and future work.

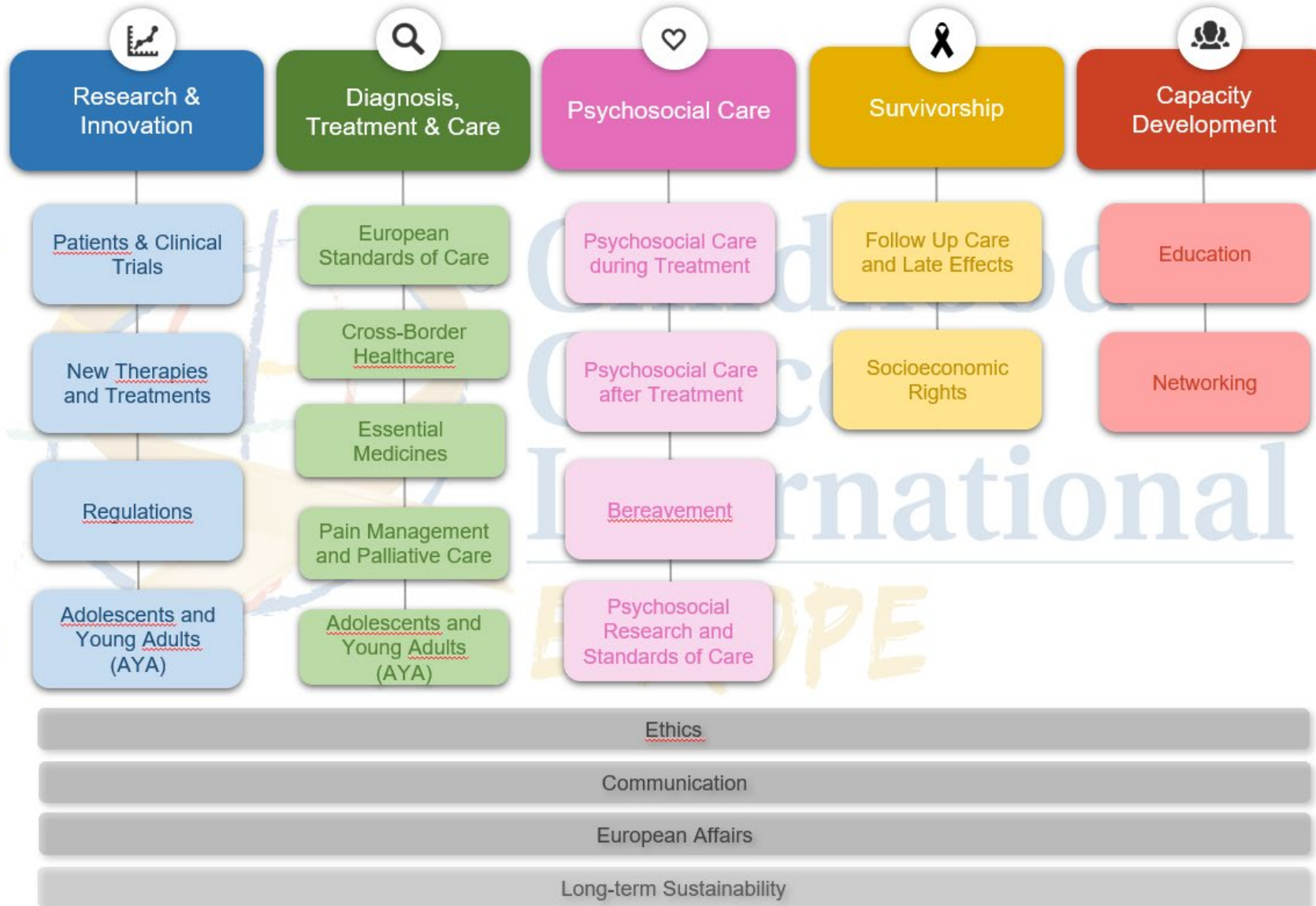
In the past months, the CCI Europe Committee and the Core Team (= members of CCI Europe Head Office, Policy Department and Committee) developed abstracts (brief, concise explanations) for each of CCI Europe's five pillars:

Research & Innovation, Diagnosis, Treatment & Care, Survivorship, Psychosocial Care, Capacity Development.

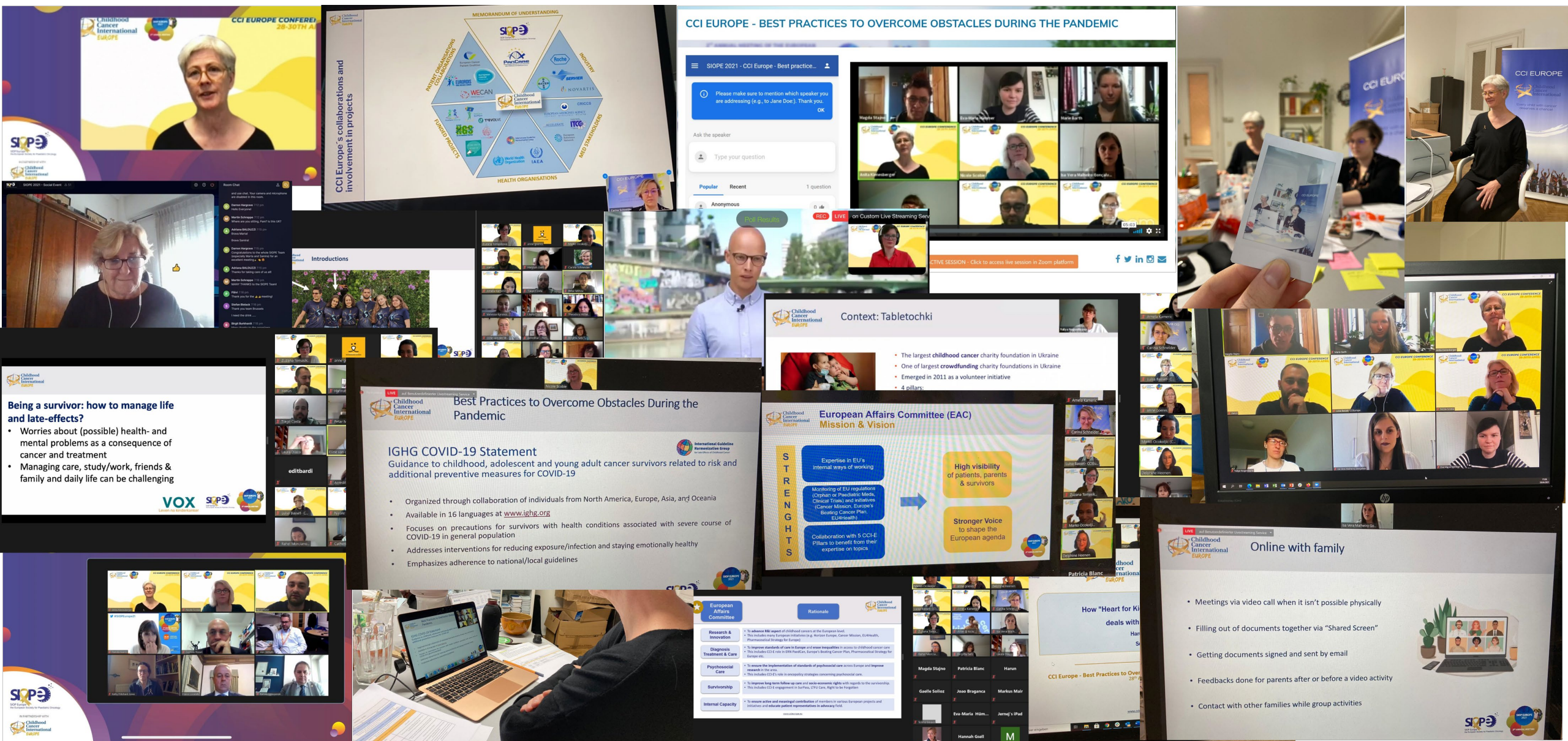
These abstracts should help CCI Europe members (old and new), strategic partners, external stakeholders and supporters see at a glance what CCI Europe stands for and what areas CCI Europe is involved in. They are also the grounds on which a more detailed strategic plan will be developed over the next year.

CCI Europe's Strategic Plan

CCI Europe Pillars & Subpillars



Pandemic did not stop us from keeping childhood cancer in the spotlight!



CCI Europe's collaborations and involvement in projects





#WECAREWESHARE

FOLLOW US AND LEARN WHAT CCI EUROPE IS WORKING ON:



europe@cci.care



www.ccieurope.eu



[/europecci](https://www.facebook.com/europecci)



[/cci.europe](https://www.instagram.com/cci.europe)



[/cci_europe](https://twitter.com/cci_europe)



[/childhood-cancer-international-europe](https://www.linkedin.com/company/childhood-cancer-international-europe)

